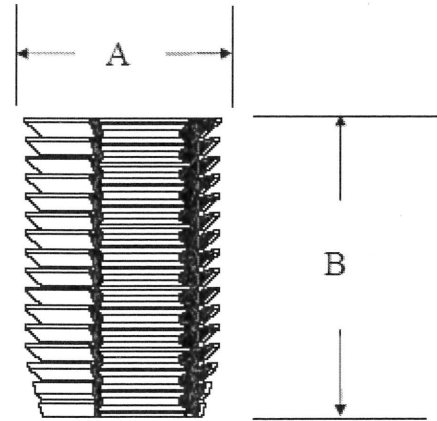
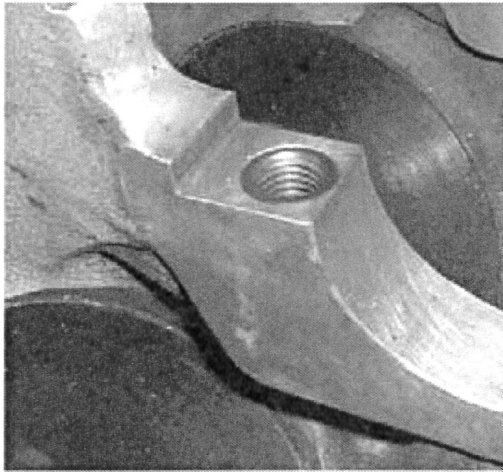


FFT Inserts (Imperial – Inch) Selection Chart



FFT Inserts (Imperial – Inch)

Internal Thread Size	A	B	Drill Size	Drill P/N	Tap P/N	Install Tool P/N	Starter Kit P/N
1/4-20	0.353	0.315	0.316	FT2DB-1	FT2FT-1	FP21420K	FFT2S1420K
1/4-20	0.353	0.630	0.316	FT2DB-1	FT2FT-1	FP21420K	FFT21420K
1/4-28	0.353	0.315	0.316	FT2DB-1	FT2FT-1	FP21428K	FFT2S1428K
1/4-28	0.353	0.630	0.316	FT2DB-1	FT2FT-1	FP21428K	FFT21428K
5/16-18	0.465	0.400	27/64"	FT3DB-1	FT3FT-1	FP351618K	FFT3S51618K
5/16-18	0.465	0.780	27/64"	FT3DB-1	FT3FT-1	FP351618K	FFT351618K
5/16-24	0.465	0.400	27/64"	FT3DB-1	FT3FT-1	FP351624K	FFT3S51624K
5/16-24	0.465	0.780	27/64"	FT3DB-1	FT3FT-1	FP351624K	FFT351624K
3/8-16	0.595	0.470	33/64"	FT4DB-1	FT4FT-1	FP43816K	FFT4S3816K
3/8-16	0.595	0.935	33/64"	FT4DB-1	FT4FT-1	FP43816K	FFT43816K
3/8-24	0.595	0.470	33/64"	FT4DB-1	FT4FT-1	FP43824K	FFT4S3824K
3/8-24	0.595	0.935	33/64"	FT4DB-1	FT4FT-1	FP43824K	FFT43824K
7/16-14	0.595	0.625	33/64"	FT4DB-1	FT4FT-1	FP471614K	FFT4S71614K
7/16-14	0.595	1.100	33/64"	FT4DB-1	FT4FT-1	FP471614K	FFT471614K
7/16-20	0.595	0.625	33/64"	FT4DB-1	FT4FT-1	FP471620K	FFT4S71620K
7/16-20	0.595	1.100	33/64"	FT4DB-1	FT4FT-1	FP471620K	FFT471620K
1/2-13	0.735	0.750	21/32"	FT5DB-1	FT5FT-1	FP51213K	FFT5S1213K
1/2-13	0.735	1.500	21/32"	FT5DB-1	FT5FT-1	FP51213K	FFT51213K
1/2-20	0.735	0.750	21/32"	FT5DB-1	FT5FT-1	FP51220K	FFT5S1220K
1/2-20	0.735	1.500	21/32"	FT5DB-1	FT5FT-1	FP51220K	FFT51220K
9/16-12	0.860	0.750	51/64"	FT6DB-1	FT6FT-1	FP691612K	FFT6S91612K
9/16-12	0.860	1.410	51/64"	FT6DB-1	FT6FT-1	FP691612K	FFT691612K
9/16-18	0.860	0.750	51/64"	FT6DB-1	FT6FT-1	FP691618K	FFT6S91618K
9/16-18	0.860	1.410	51/64"	FT6DB-1	FT6FT-1	FP691618K	FFT691618K
5/8-11	0.860	0.780	51/64"	FT6DB-1	FT6FT-1	FP65811K	FFT6S5811K
5/8-11	0.860	1.560	51/64"	FT6DB-1	FT6FT-1	FP65811K	FFT65811K
5/8-18	0.860	0.780	51/64"	FT6DB-1	FT6FT-1	FP65818K	FFT6S5818K
5/8-18	0.860	1.560	51/64"	FT6DB-1	FT6FT-1	FP65818K	FFT65818K
3/4-10	1.095	0.940	1-1/64"	FT8DB-1	FT8FT-1	FP83410K	FFT8S3410K
3/4-10	1.095	1.875	1-1/64"	FT8DB-1	FT8FT-1	FP83410K	FFT83410K
3/4-16	1.095	0.940	1-1/64"	FT8DB-1	FT8FT-1	FP83416K	FFT8S3416K
3/4-16	1.095	1.875	1-1/64"	FT8DB-1	FT8FT-1	FP83416K	FFT83416K
7/8-9	1.220	1.100	1-9/64"	FT9DB-1	FT9FT-1	FP97809K	FFT9S7809K
7/8-9	1.220	1.750	1-9/64"	FT9DB-1	FT9FT-1	FP97809K	FFT97809K
7/8-14	1.220	1.100	1-9/64"	FT9DB-1	FT9FT-1	FP97814K	FFT9S7814K
7/8-14	1.220	1.750	1-9/64"	FT9DB-1	FT9FT-1	FP97814K	FFT97814K
1"-8	1.220	1.125	1-9/64"	FT9DB-1	FT9FT-1	FP91008K	FFT9S1008K
1"-8	1.220	2.500	1-9/64"	FT9DB-1	FT9FT-1	FP91008K	FFT91008K
1"-14	1.220	1.125	1-9/64"	FT9DB-1	FT9FT-1	FP91014K	FFT9S1014K
1"-14	1.220	2.000	1-9/64"	FT9DB-1	FT9FT-1	FP91014K	FFT91014K

FFT Style inserts are one of the most popular and easiest to install.

Our insert Finishing is flush to the surface when installed.

Torque tightening of the bolt into the insert creates a upward drawing force required to maintain the radial drawing force that reinforces the surrounding metal.

All dimensions are in Imperial – Inches unless otherwise stated

THIS INSERT EXCEPT CUSTOM 1/4" BSP INTERNAL THREAD AND 11mm LENGTH
TAP DRILL = 21/32" = 16.73mm