

GRIOT'S

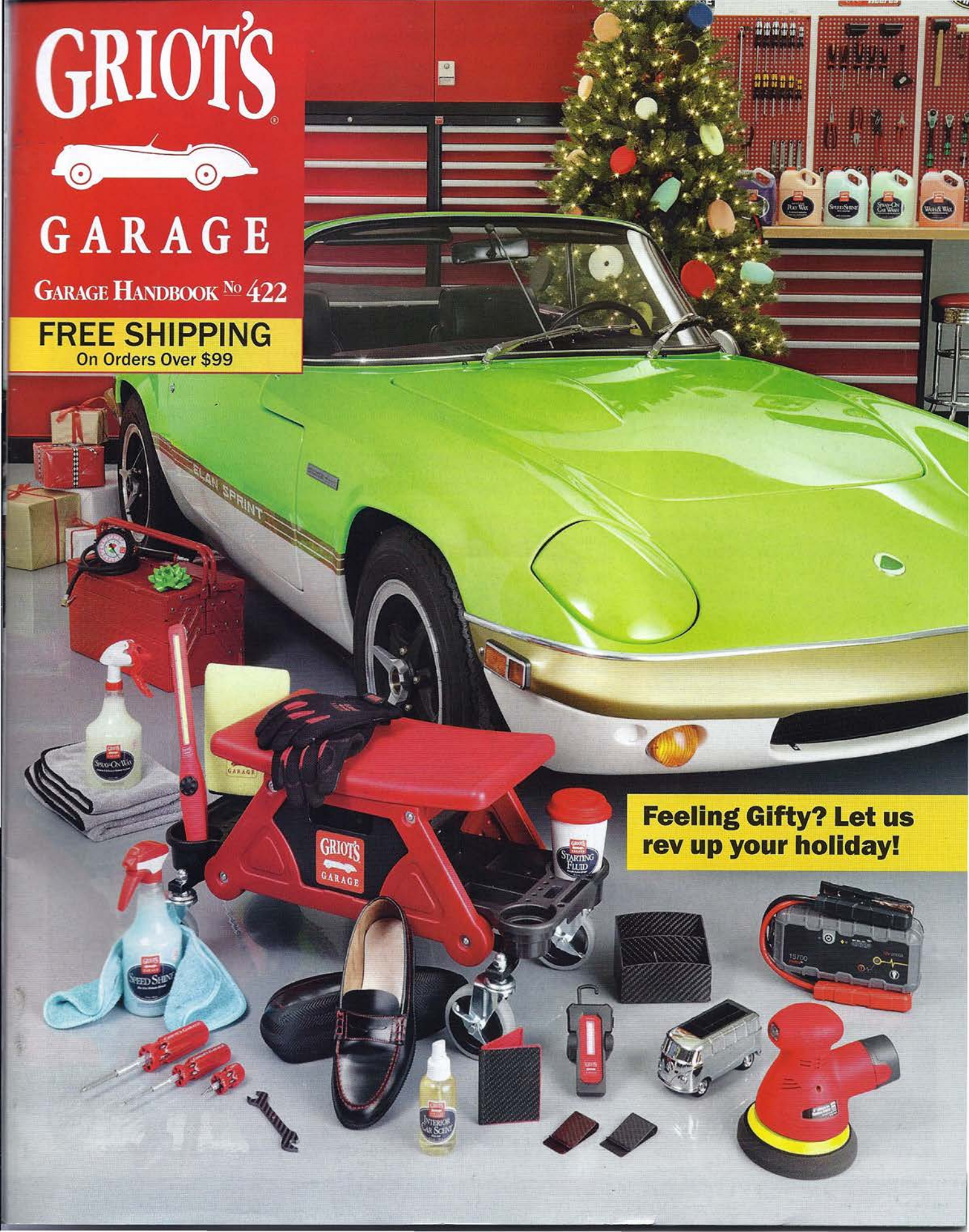


GARAGE

GARAGE HANDBOOK No 422

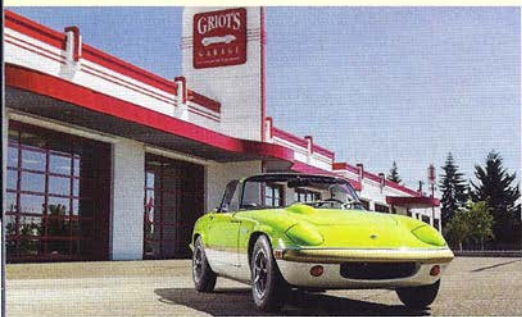
FREE SHIPPING

On Orders Over \$99



**Feeling Gifty? Let us
rev up your holiday!**

On The Cover



Sports Car Lite | 1972 Lotus Elan Sprint

Like all Lotus machines, light weight was the driving force of the Elan's design. The steel frame, fiberglass bodied car weighed about 1,600 pounds. This car is a later Sprint model produced between 1970 and 1973. Owner Tom L. added suspension and wheels from the factory racing 26R version of the earlier S1 Elan. J&L Fabricating took the car apart, refreshed critical parts, and reassembled the Elan to retain its originality. We like how the gold bumper lines up with the gold Sprint accent graphic and balances the car's off-white lower and bright green upper sections. See more at griotsgarage.com/covercars