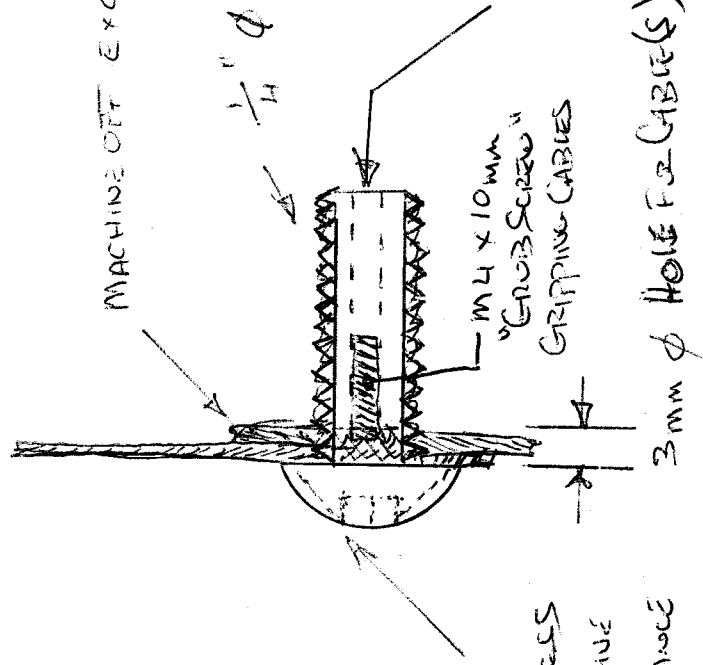


SKETCH. 2.

EGIN WINDOWS CABLE
GLASS → BOLT S. → CABLE(S)

OPTION 2.

Tested 10th OCT 08. ✓



REMOVE EXCESS
DOME, TO GIVE
EXTRA CLEARANCE
IF NEEDED.

DRILL & TAP M4 ϕ
USE M4 ϕ x 10 LONG "GRUBS SCREWS"
WITH ALLIUM CAP

FULLY TIGHTENED ONTO CABLE(S) THEN
GENTLY TIGHTEN NYLOCK $\frac{1}{2}$ NOT TO
SECURE TO GLASS

COPPER WASHER AT BOTTOM HEAD END

FIBRE WASHER BELOW NOT